



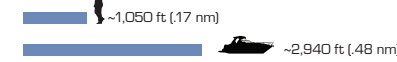
First Mate II (MS, MLS, HM, & BHM-Series)

- Handheld
- Bi-ocular models offer comfortable long-term, long-range surveillance option
- Use it anywhere on or off the boat, for search and rescue, surveillance, and situational awareness
- Complements other thermal cameras

See detailed specifications at FLIR.com/Maritime.

Thermal Range Performance¹

MS-224 & HM-224 Pro (24° Lens)



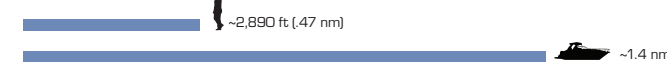
MS-324, & HM-324 XP+ (24° Lens)



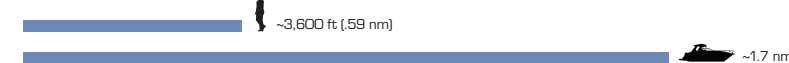
MLS-317



HM-324 XP+ with 2x Extender¹ (12° Lens)



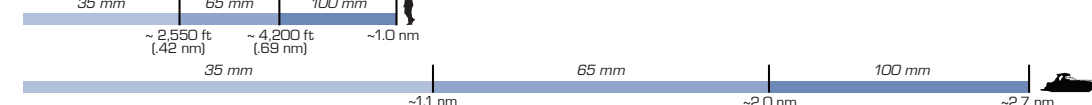
MLS-618



HM-307XP (7° Lens)



BHM-3X



BHM-6XR



MD-Series

- Affordable, fixed-mount thermal imager that is easy to install and operate
- Interface options accessible through select MFDs, optional JCU, or iOS devices when Wi-Fi is available
- Weighs only three pounds

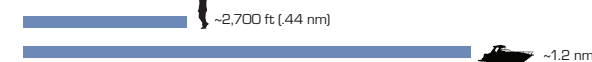
See detailed specifications at FLIR.com/MD-Series.

Thermal Range Performance¹

MD-324¹

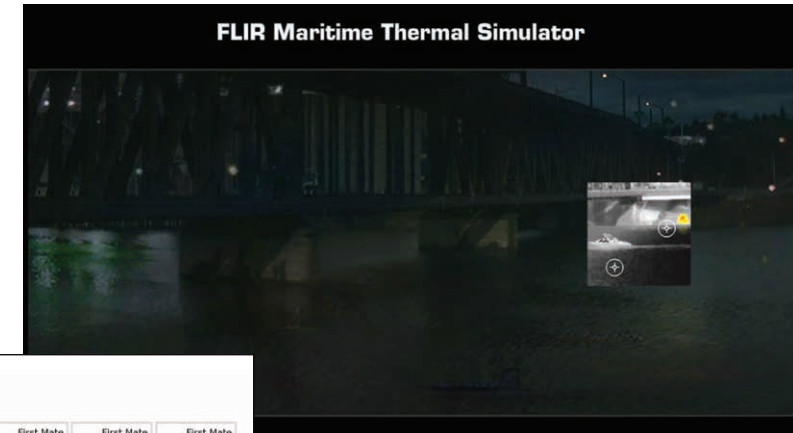


MD-625¹



FLIR.com/Maritime

There's no better way to fully comprehend the power of thermal imaging than to try a camera for yourself. The next best thing is watching thermal video, which is exactly what you can do at www.FLIR.com/Maritime. You can also try the Thermal Simulator and First Mate II Product Selector, read about the different ways thermal imaging is used in a maritime environment, and learn more about all FLIR thermal night vision systems for maritime use.



Visit FLIR.com/Maritime and try the new Maritime Thermal Simulator

Compare FLIR First Mate Models

Not sure which model is best for you? Select models below to compare.

Compare products
You have no items to compare.

Filter Options

Range - Detection of a Small Vessel

At least 0.32 ft / 1.59 ft

Detector Resolution
 340x140 640x512

Digital Still Image Storage
 Required Not Required

Digital Video Storage
 Required Not Required

Analog Video Out
 Required Not Required

Show all

Note: Actual range may vary depending on camera setup, environmental conditions, user experience, and display method. Thermal images shown are for illustrative purposes only, and may not have been taken by the camera series depicted.

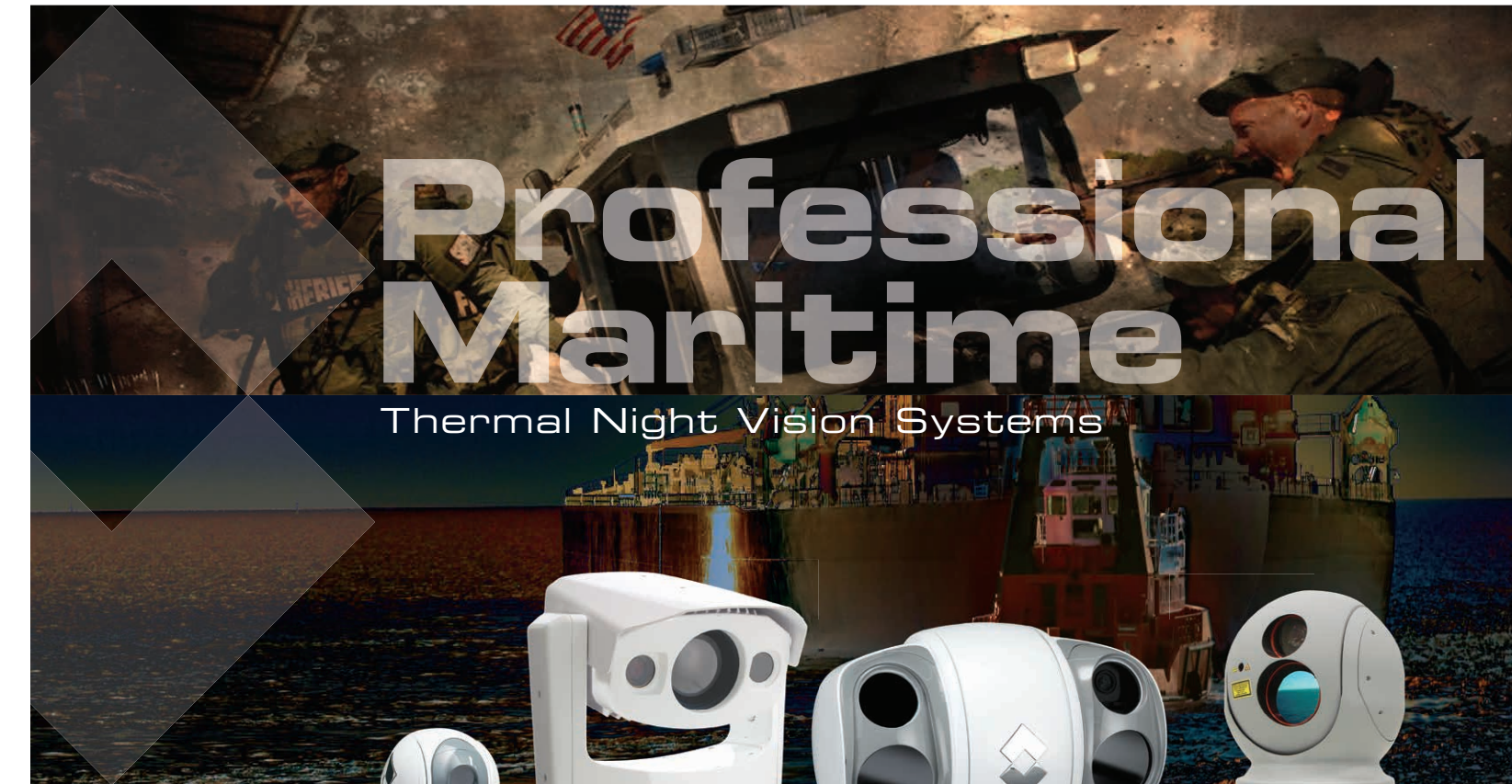
Compare products online with the First Mate II Product Selector

About FLIR Systems

As the world's largest commercial infrared company, FLIR Systems has fielded more high-quality maritime thermal night vision systems than anyone in the world. Our rugged, stabilized imagers are on thousands of civil and maritime platforms in the U.S. and around the world, more than every other manufacturer combined.

With thousands of our thermal cameras on the job in military, scientific, law enforcement, and security applications, FLIR brings an unmatched level of experience and dedication to the creation of cutting-edge thermal night vision systems. We design and manufacture all critical technologies inside our products, including detectors, electronics, and special lenses.

Whether you're heading out early, coming home late, or cruising around the clock, FLIR has a thermal night vision system to meet your needs.



Professional Maritime

Thermal Night Vision Systems



PORTLAND
Corporate Headquarters
FLIR Systems, Inc.
27700 SW Parkway Ave.
Wilsonville, OR 97070
USA
PH: +1 877.545.5094

BOSTON
Sales
FLIR Systems, Inc.
9 Townsend West
Nashua, NH 03063
USA
PH: +1 877.545.5094

SANTA BARBARA
FLIR Systems, Inc.
70 Castilian Dr.
Goleta, CA 93117
USA
PH: +1 877.545.5094

NASDAQ: FLIR

See at Night. Stay Safe.

A Camera for Every Vessel

All FLIR thermal night vision cameras let you see clearly in total darkness, but you can also get color or lowlight cameras, gyro-stabilization, radar interfacing, and other helpful features. Which FLIR is right for you?

- How far do you need to see?
- Are you going to integrate the FLIR camera with other on-board systems?
- Do you want to be able to take it off of your boat?

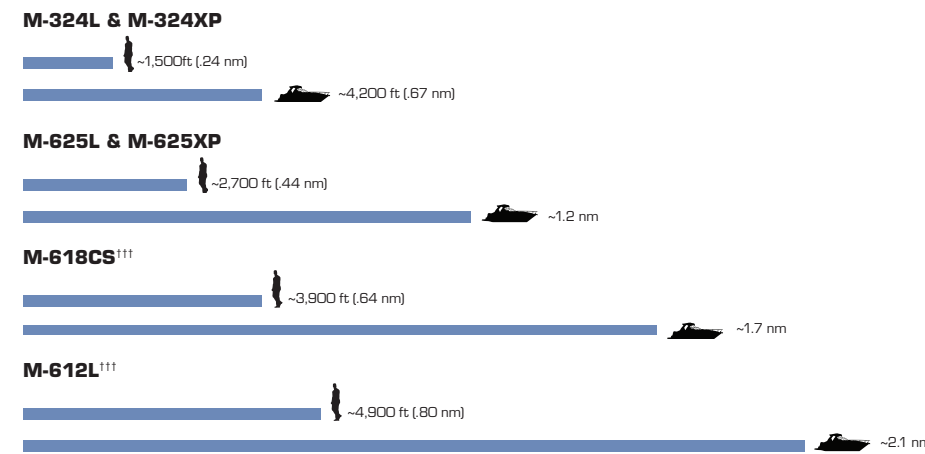


M-Series

- Premium pan/tilt thermal imager
- Thermal only or thermal/lowlight multi-sensor configurations
- Standard and high-resolution thermal camera options
- 2X and 4X e-zoom functions

- Auto-scan feature
 - Easy-to-use joystick control
- See detailed specifications at FLIR.com/M-Series.

Thermal Range Performance[†]



SeaFLIR

- Military-grade, long-range, multi-sensor system (for professional first responders only)
- Gyro-stabilized pan/tilt platform
- Cooled MWIR thermal camera
- Daylight/lowlight color camera
- Radar slew-to-cue
- Video Tracker
- Laser payloads
- Continuous optical zoom

- Laser payloads
 - Continuous optical zoom
- See detailed specifications at FLIR.com/SeaFLIR

Thermal Range Performance[†]



Why Thermal is Better

Thermal imaging cameras detect and display tiny differences in heat, not light. So no matter how much light is available—from pitch black to moonlight to severe midday glare—thermal imagers display clear infrared video. The “detectors”—the key to FLIR technology for decades—pick up the thermal energy emitted by everything, even ice! FLIR cameras then convert that data into the crisp infrared video you see on the display.



Voyager

- Long-range
- Gyro-stabilized pan/tilt
- Firefighting software
- 2 thermal cameras
- Daylight/lowlight color camera
- Network-ready
- NMEA interfaces
- Radar slew-to-cue

- Video Tracker
- See detailed specifications at FLIR.com/Voyager.

Thermal Range Performance[†]



MU/MV Series

- Military-grade, long-range, multi-sensor system
- Pan 360° and tilt +/- 90°
- Active gyro-stabilization
- Video and radar tracking
- Continuous optical zoom
- Picture-in-Picture (PIP) mode
- Digital Detail Enhancement (DDE)

- Joy Stick Control Unit
 - Ball Up/Down Configuration
- See detailed specifications at FLIR.com/MU-Series

Thermal Range Performance[†]



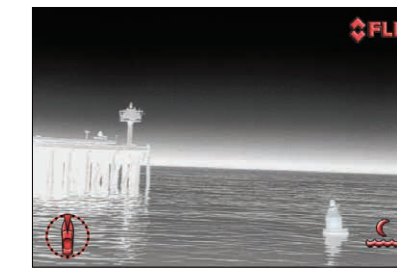
Night Vision (NVG)



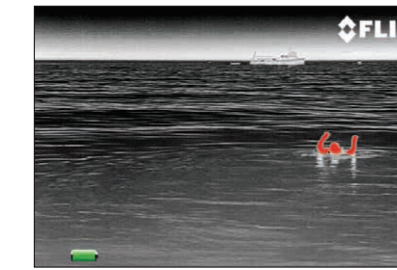
Day light camera



Thermal Image



Identify buoys and other obstacles in the water.



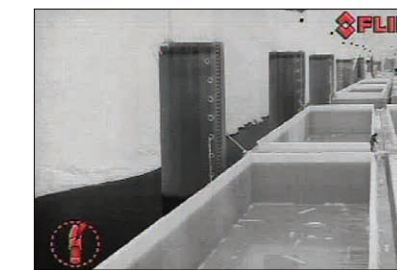
Search and Rescue day or night.



Locate stranded vessels.



Oil on water.



Crew safety.



Iceberg detection.

[†] = Actual object detection range performance may vary depending on camera set-up, environmental conditions, user experience, and type of display used.
^{††} = 2x Extender pertains to HM-Series only.
^{†††} = The M-612L provides extremely long-range imaging and should only be used on stable platforms for best performance.
 Standard analog video output for viewing on any monitor with an analog video input.
 All specifications are subject to change without notice. Visit www.flir.com for the most up-to-date specifications.